



**Altek<sup>®</sup>**  
manufacturer since 1920

**QUIZAS  
COLLECTION**





QUIZAS COLLECTION  
is design by TECHNICAL EMOTIONS

## QUIZAS OUTDOOR FURNITURE

The collection consisting of armchair, sofas,  
poufs, tables and lamps.



**Altek®**



*The romantic outdoor furniture  
QUIZAS is inspired by the eternal game of the seduction.  
Like the song and the rhythm of bolero, these furniture elements transport you to a garden with the loved person, where  
you could take a relaxing breakfast or enjoy a cup of tea while watching the sunset.*



## ARMCHAIR QUIZAS




### Quizas Armchair

High back armchair with structure in rod iron diam.12 mm. and welded wire mesh, zinc plated and painted in any RAL colour.

Removable upholstered seat with special foam and fabric for outdoor use.

**Optional:** loose cushions



A modern outdoor armchair with a high, curved metal mesh back and a light-colored cushion, set against a stone wall. The chair is made of a silver-colored metal frame with a fine mesh pattern. The backrest is tall and curved, providing a sense of enclosure. The seat is a thick, light-colored cushion. The chair is positioned on a paved surface in front of a wall made of irregular, natural stones. A semi-transparent circular text box is overlaid on the left side of the image.

*The enveloping and comfortable shapes protect and embrace, creating an intimate space where you can expect calm and rest in solitude or enjoy a pleasant conversation.*



**SOFA**  
WITH 2 SEATS  
**QUIZAS**



**Quizas Sofa 2 seats**

Modular sofa with structure in rod iron diam.12 mm. and welded wire mesh, zinc plated and painted in any RAL colour. Removable upholstered seat with special foam and fabric for outdoor use.

**Optional:** loose cushions





*AT THE SAME TIME, THE SEMI  
TRANSPARENT FINISH ALLOWS  
YOU TO LIVE AND INTEGRATE IN  
THE ENVIROMENT, CREATING  
A SOFT GAME OF COMPLICITY  
BETWEEN INTROSPECTION  
AND **SHARING** TOO. THROUGH  
THE NET THAT FILTER THE  
SUNLIGHT, YOU CAN ENJOY THE  
BREEZE AND PERFUME OF THE  
GARDEN.*



# SOFA WITH 3 SEATS

QUIZAS

## Quizas Sofa 3 seats

Modular sofa with structure in rod iron diam.12 mm. and welded wire mesh, zinc plated and painted in any RAL colour. Removable upholstered seat with special foam and fabric for outdoor use.

**Optional:** loose cushions



Altek®









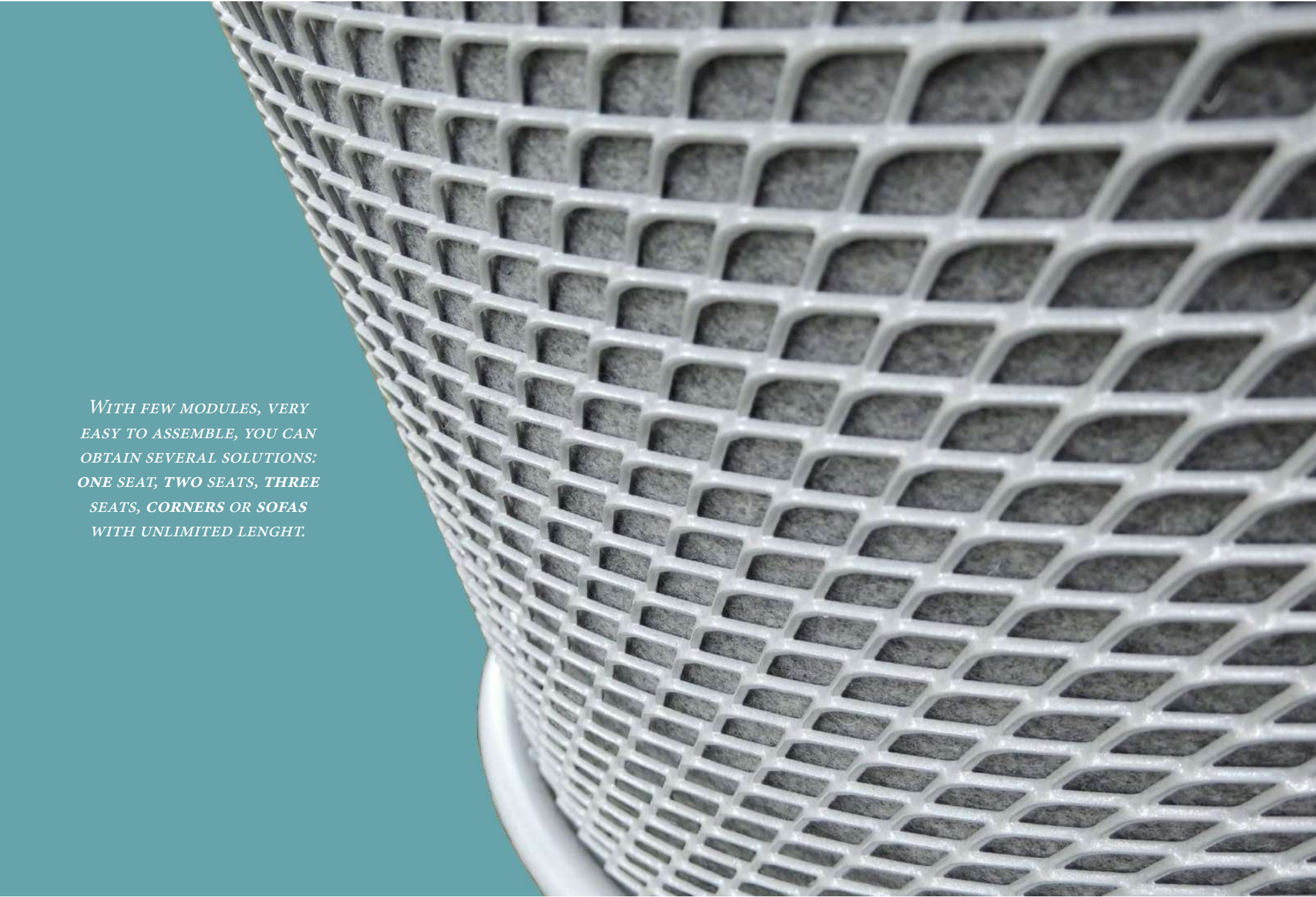
## SOFA CORNER QUIZAS



### Quizas Sofa Corner

Modular sofa with corner with structure in rod iron diam.12 mm. and welded wire mesh, zinc plated and painted in any RAL colour. Removable upholstered seat with special foam and fabric for outdoor use.  
Optional: loose cushions





*WITH FEW MODULES, VERY  
EASY TO ASSEMBLE, YOU CAN  
OBTAIN SEVERAL SOLUTIONS:  
ONE SEAT, TWO SEATS, THREE  
SEATS, CORNERS OR SOFAS  
WITH UNLIMITED LENGTH.*

## TABLES

### QUIZAS

#### Quizas occasional low round table

Occasional table with structure in rod iron diam.12 mm. and welded wire mesh sides and top, zinc plated and painted in any RAL colour. Top diam. 600 mm.



Altek®

#### Quizas occasional low oval table

Occasional oval table with structure in rod iron diam.12 mm. and welded wire mesh sides and top, zinc plated and painted in any RAL colour.







# POUFS

## QUIZAS

### Quizas round pouf

Round pouf with structure in rod iron diam.12 mm. and welded wire mesh, zinc plated and painted in any RAL colour. Removable upholstered seat with special foam and fabric for outdoor use.



### Q u i z a s oval pouf

Oval large pouf with structure in rod iron diam.12 mm. and welded wire mesh, zinc plated and painted in any RAL colour. Removable upholstered seat with special foam and fabric for outdoor use.







# LIGHTS

## QUIZAS

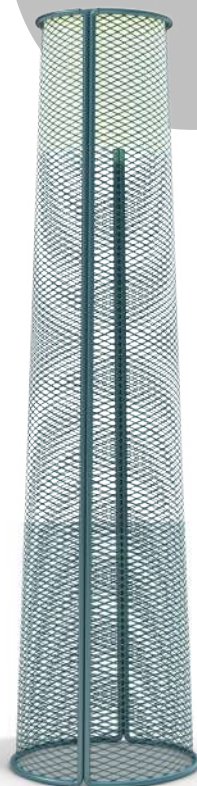
### Quizas low candle holder

Low candle holder with structure in rod iron diam.12 mm. and welded wire mesh, zinc plated and painted in any RAL colour.



### Quizas floor lamp

Floor lamp with structure in rod iron diam. 12 mm. and welded wire mesh, zinc plated and painted in any RAL colour.



### Quizas high candle holder

High candle holder with structure in rod iron diam.12 mm. and welded wire mesh, zinc plated and painted in any RAL colour.









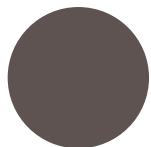
## AVAILABLE COLOURS for the STRUCTURE



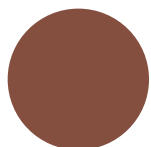
Polyester powder coat  
**PEARL GREY - RAL 7047**



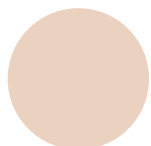
Polyester powder coat  
**DOVE - PANTONE 402C**



Polyester powder coat  
**COFFEE**



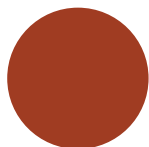
Polyester powder coat  
**CORTEN**



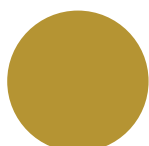
Polyester powder coat  
**PINK**



Polyester powder coat  
**WHITE - RAL 9003**



Polyester powder coat  
**RAL 3002**



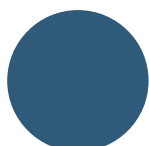
Polyester powder coat  
**OCRA YELLOW - RAL 1024**



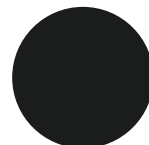
Polyester powder coat  
**OLIVE GREEN - RAL 6021**



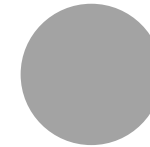
Polyester powder coat  
**LIGHT GREY - RAL 7035**



Polyester powder coat  
**AZURE BLUE - RAL 5009**



Polyester powder coat  
**BLACK - RAL 9005**

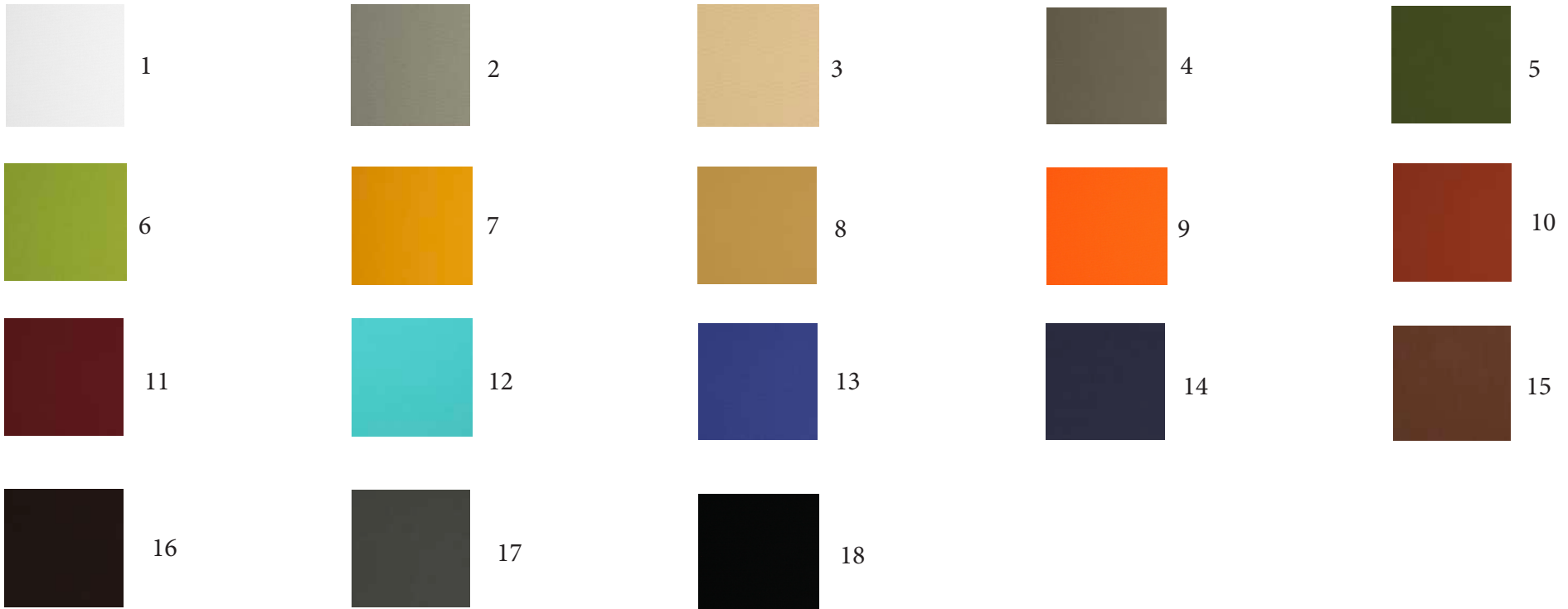


Polyester powder coat  
**ALUMINIUM - RAL 9006**





## AVAILABLE COLOURS for the CUSHIONS CLOUDS BREAK



**Composition:** 100% outdoor acrylic

**Light fastness:** 7-8, EN ISO 105 - B04

**Tensile strenght WARP:** 1180, UNI EN ISO 13934 -1

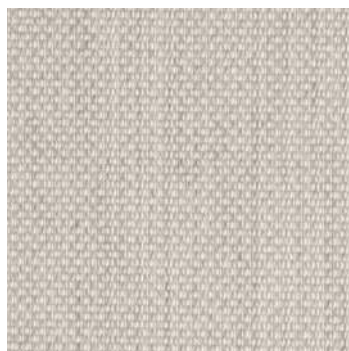
**Tensile strenght WEFT:** 686, UNI EN ISO 13934 -1

**Characteristics:** Tear strenght, easy to clean, resistance to UV rays, resistance o mould and bacteria, oeko tex, water repellent and fire resistance.

# AVAILABLE COLOURS

## for the CUSHIONS

### CLOUDS TWILIGHT



301



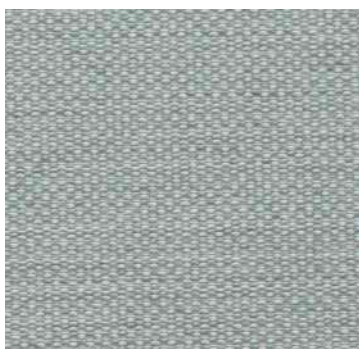
306



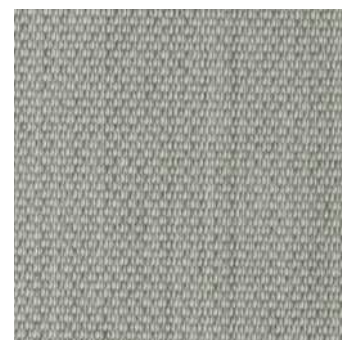
307



309



312



318

**Composition:** 100% outdoor acrylic

**Light fastness:** 7-8, EN ISO 105-B04

**Tensile strenght WARP:** 2200, UNI EN ISO 13934-1

**Tensile strenght WEFT:** 1300, UNI EN ISO 13934-1

**Characteristics:** Tear strenght, easy to clean, resistance to UV rays, resistance to mould and bacteria, oeko tex, water repellent and fire resistance.





# TECHNICAL DATA



**Quizas Armchair**

**height:** 1250 mm.  
**seat height:** 440 mm.  
**width:** 830 mm.  
**depth:** 820 mm.



**Quizas Sofa 2 seats**

**height:** 1250 mm.  
**seat height:** 440 mm.  
**width:** 1450 mm.  
**depth:** 820 mm.



**Quizas Sofa 3 seats**

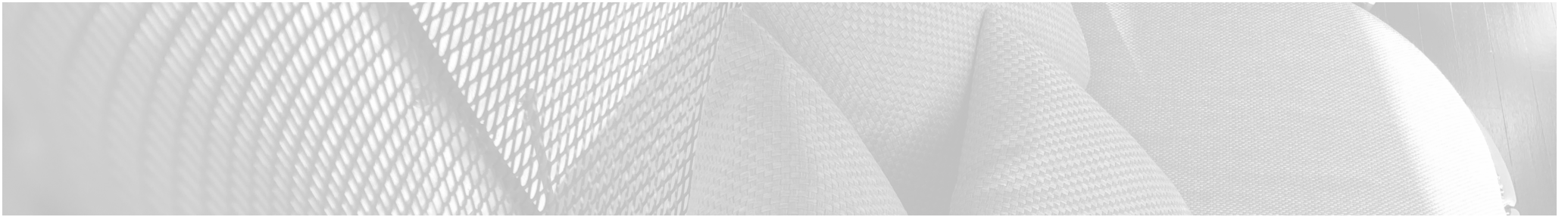
**height:** 1250 mm.  
**seat height:** 440 mm.  
**width:** 2070 mm.  
**depth:** 820 mm.



**Quizas Sofa Corner**

**height:** 1250 mm.  
**seat height:** 440 mm.





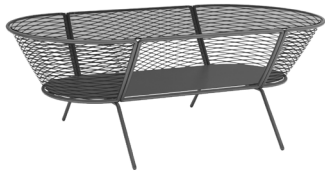
**Quizas occasional low round table**

**height:** 400 mm.  
**width:** 600 mm.  
**depth:** 600 mm.



**Quizas low candle holder**

**height:** 412 mm.  
**width:** 290 mm.  
**depth:** 290 mm.



**Quizas occasional low oval table**

**height:** 400 mm.  
**width:** 1085 mm.  
**depth:** 533 mm.



**Quizas round pouf**

**height:** 440 mm.  
**width:** 585 mm.  
**depth:** 585 mm.



**Quizas oval pouf**

**height:** 440 mm.  
**width:** 1085 mm.  
**depth:** 533 mm.



**Quizas high candle holder**

**height:** 1412 mm.  
**width:** 362 mm.  
**depth:** 362 mm.



**Quizas floor lamp**

**height:** 1412 mm.  
**width:** 362 mm.  
**depth:** 362 mm.



QUIZAS COLLECTION

is design by TECHNICAL EMOTIONS





# Quality through innovation

**ALTEK ITALIA DESIGN Srl**

Via Vegri 40 - 36010 Zanè (VI) Italy

Tel +39 0445316500

[www.altekitaliadesign.it](http://www.altekitaliadesign.it)

[info@altekitaliadesign.it](mailto:info@altekitaliadesign.it)

