

Altek®

Two
Collection



**INDOOR &
OUTDOOR**
solutions



“For me the specific philosophy during the design phase it develops during the same project having an emotional and intuitive approach for each individual object.

Each object is unique but not essential and at the same time must be practical, multifunctional, returning to the idea of simplicity, indispensable feature for each design object”.

Giacomo Cattani

Architect & Interior Designer, founder of Sagitair



In&Out Collection

easy to adapt



OUTDOOR chair_

INDOOR chair _

EOS/3 table_

EOS/4 table_

SHE table_

HE table_

COFFEE table_

TWO / OUTDOOR



The **TWO** chair is characterized by a light and modern design. An outdoor chair can be enriched with cushions for greater comfort.







This product is made from metal powder coated in several finishes. The originality of TWO collection is the seat and back in perforated sheet metal, suitable for outdoor use. For the outside, there is a galvanizing treatment.



TWO / INDOOR



TWO chair with the addition of soft cushions of full or partial padding. Its fresh and minimal design is able to characterize both indoor and outdoor environments, becoming elegant and comfortable for any space.













EOS / 3



EOS table central base structure with 3 stars made of painted tubular steel. Adjustable feet. Top in ceramic or HPL different shapes, sizes and finishes. Suitable for both indoor and outdoor environments.







EOS/4



EOS table central base structure with 4 stars made of painted tubular steel. Adjustable feet. Top in ceramic or HPL different shapes, sizes and finishes.

Suitable for both indoor and outdoor environments.

HE & SHE



Metal tables with ballasted cylinder base, with cylinder available in two shapes: Short - SHE or Long - HE. Steel structure painted in various colours. Top in ceramic or HPL in different shapes, sizes and finishes.

Suitable for both indoor and outdoor environments.



Available in the version with galvanizing treatment for outdoor use.
Also available in the low version for coffee tables.

SHE - Coffee table. Metal tables with ballasted cylinder base. Steel structure painted in various colours. Top in ceramic or HPL in different shapes and sizes.

Suitable for both indoor and outdoor environments.



Structure



Polyester powder coat
BLACK - RAL 9005



Polyester powder coat
ANTHRACITE - RAL 7016



Polyester powder coat
ROAST COFFEE- RAL 8014



Polyester powder coat
TITANIUM



Polyester powder coat
TAUPE - PANTONE 402C



Polyester powder coat
ALUMINIUM - RAL 9006



Polyester powder coat
LIGHT GREY - RAL 7035



Polyester powder coat
WHITE - RAL 9003



Polyester powder coat
PALE GREEN - RAL 6021



Polyester powder coat
TURQUOISE - RAL 6034



Polyester powder coat
AZURE BLUE - RAL 5009



Polyester powder coat
SULFUR YELLOW - RAL 1016



Polyester powder coat
SAFFRON YELLOW - RAL 1017



Polyester powder coat
OCRA YELLOW - RAL 1024



Polyester powder coat
RED - RAL 3002



Polyester powder coat
CORTEN

Ceramic top



Ceramic
CALACATTA GOLD

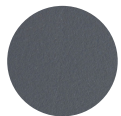


Ceramic
SAHARA NOIR

HPL* 12 mm



NERO
0509



GRIGIO
TRAFFICO
0738



BIANCO
NUBE
0028



ROVERE
VALDWEG
4627

* HPL Compact Form resists just about everything: wear and tear, humidity, steam, ultraviolet rays, termites, fungi, spores and mildew (suitable for coming into contact with foodstuffs). It is self-extinguishing and fire-resistant. Ideal for indoor and outdoor public spaces.

Fabrics



Clouds Break - 1 Clouds Break - 2 Clouds Break - 3 Clouds Break - 4 Clouds Break - 5 Clouds Break - 6 Clouds Break - 7 Clouds Break - 8 Clouds Break - 9

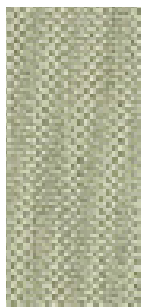


Clouds Break - 10 Clouds Break - 11 Clouds Break - 12 Clouds Break - 13 Clouds Break - 14 Clouds Break - 15 Clouds Break - 16 Clouds Break - 17 Clouds Break - 18

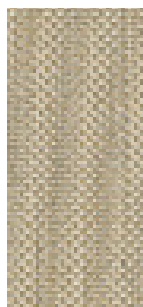
Composition:	100% outdoor acrilyc
Light fastness:	7-8, UNI EN ISO 105-B04
Tensile strenght WARP:	1180, UNI EN ISO 13934-1
Tensile strenght WEFT:	686, UNI EN ISO 13934-1
Characteristics:	Tear strength, easy to clean, resistance to UV rays, resistance to mould and bacteria, oeko tex, water repellent and fire resistance



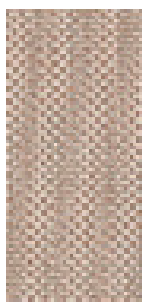
Clouds
Twilight -
301



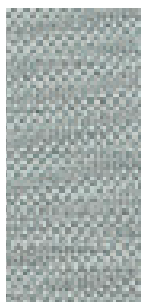
Clouds
Twilight -
306



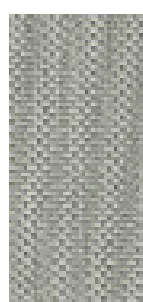
Clouds
Twilight -
307



Clouds
Twilight -
309



Clouds
Twilight -
312



Clouds
Twilight -
318

Composition:

100% outdoor acrylic

Light fastness:

7-8, UNI EN ISO 105-B04

Tensile strenght WARP:

2200, UNI EN ISO 13934-1

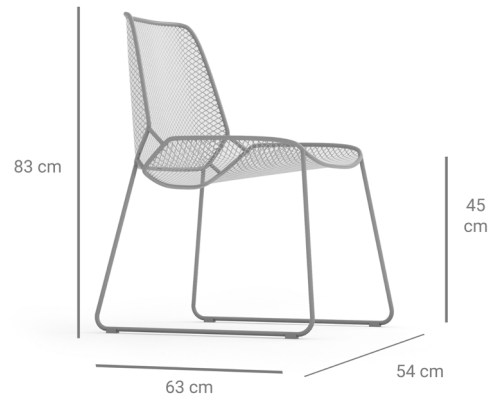
Tensile strenght WEFT:

1300, UNI EN ISO 13934-1

Characteristics:

Tear strength, easy to clean, resistance to UV rays, resistance to mould and bacteria, oeko tex, water repellent and fire resistance.

Technical information



TWO outdoor

height	83 cm
seat height	45 cm
width	54 cm
depth	63 cm



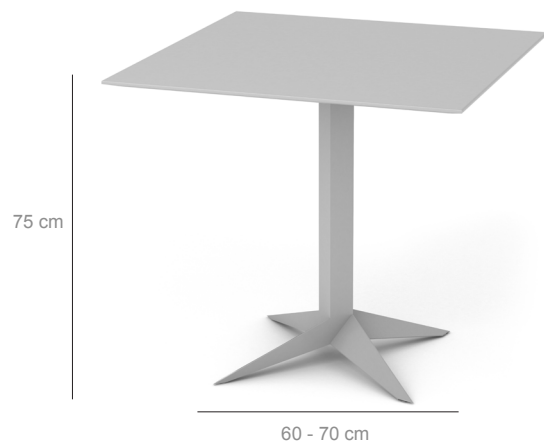
TWO indoor

height	83 cm
seat height	45 cm
width	54 cm
depth	63 cm



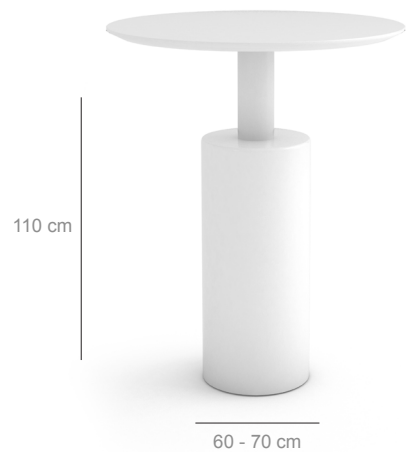
EOS dining table

height 75 cm
top diameter Ø 60 or 70 cm



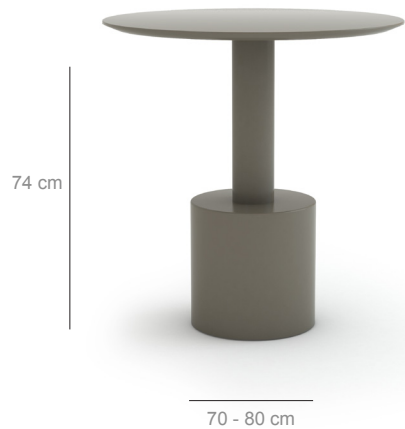
EOS dining table

height 75 cm
top size 60 x 60 or 70 x 70



HE bar table

height 110 cm
top diameter Ø 60 or 70 cm



SHE dining table

height 74 cm
top diameter Ø 70 or 80 cm



SHE coffee table

height 50 cm
overall width Ø 60 or 70 cm

Altek®

ALTEK ITALIA DESIGN SRL

Via Vegri 40,

36010 Zanè (VI) - Italy

t. +39 0445316500

m. + 39 3284161206

info@altekitaliadesign.it

www.altekitaliadesign.it

