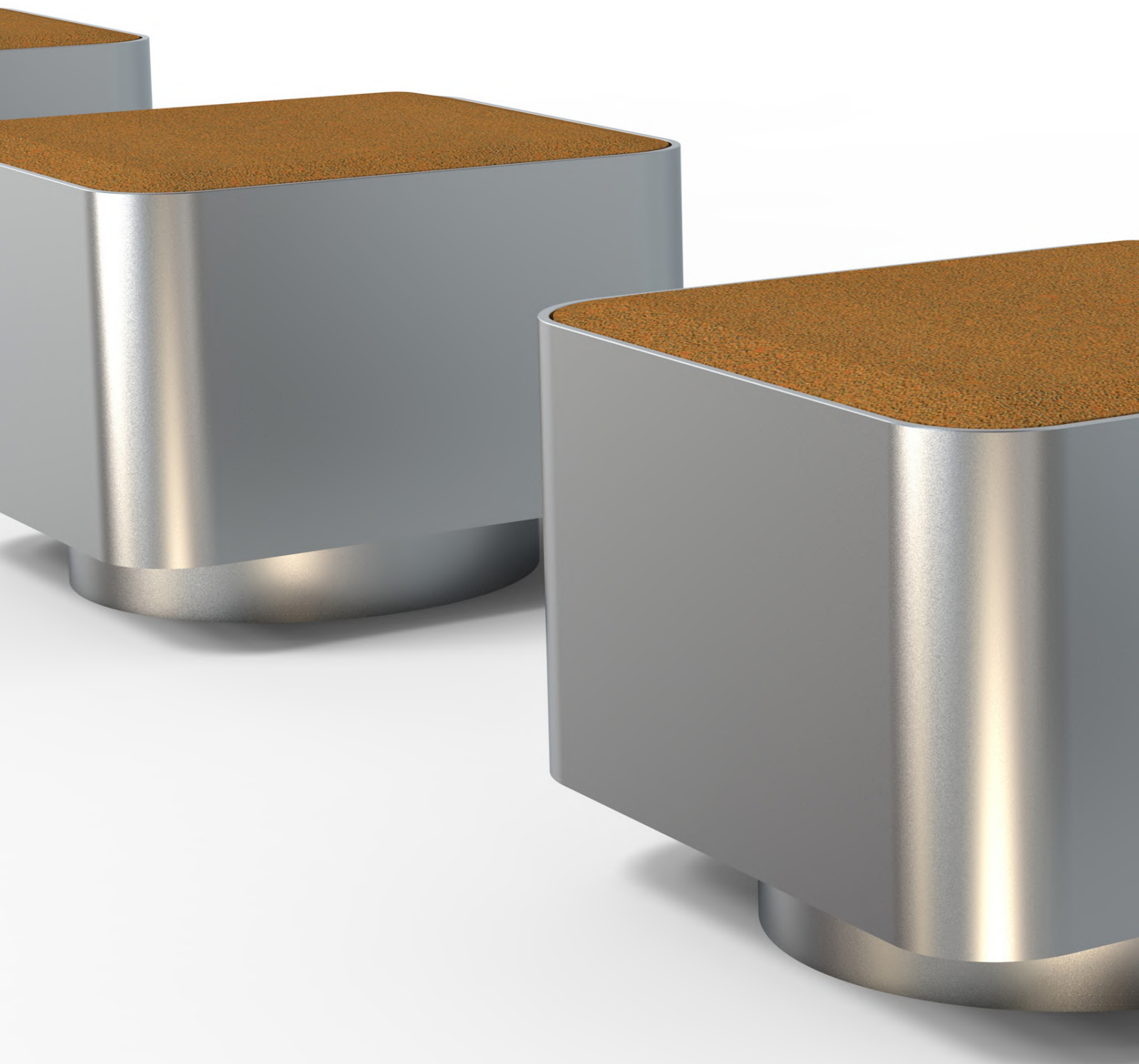


Altek®

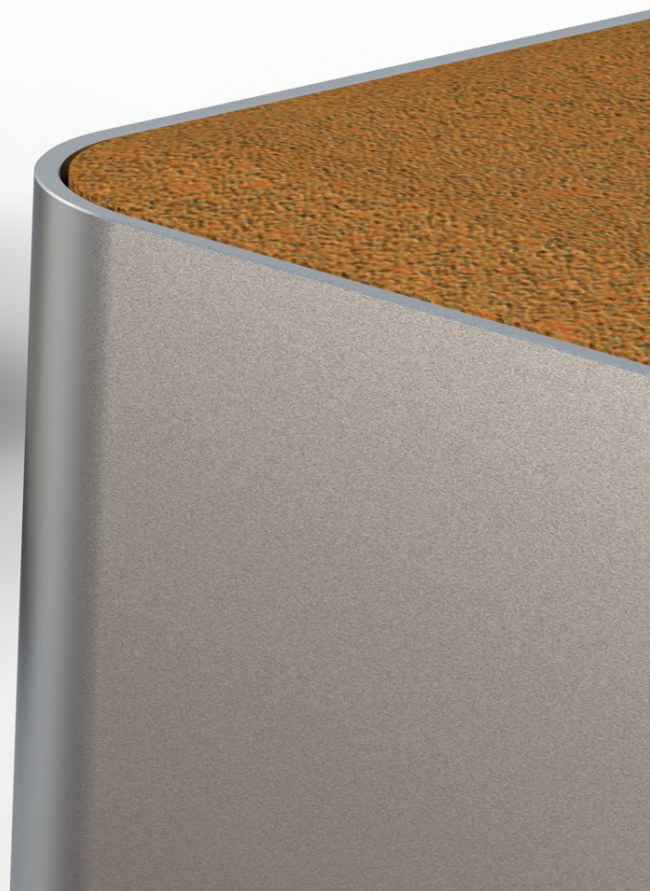


Altek[®]

—

A long journey, in continuous research starting from deep roots, from an experience handed on from father to son from four generations since 1920.

Altek offers elements of inspiration, technical development, business cooperation and also contributes financially to the innovation, promoted by professionals, especially if projects are aimed at *ethical* and *social purposes* or particularly *innovative research*.





**A NEW WORLD. NEW IDEAS AND
NEW TECHNOLOGY.**

Resysta[®]
TECHNOLOGY



THE PURPOSE

We collaborate with designers and architects looking for products with a simple and functional design and realize them using the **high new technology** and giving special attention to the choice of materials, aesthetics and versatility, **recyclable** and **green**, for the choice to give special attention to the global environment.

Here are two of our collections made with the most sustainable and cutting-edge materials:

*the **Garda** benches collection designed by Antonio Larosa. And the **Dolmen** urban furniture collection design by Charles Godbout.*





GARDA

Is a sleek **modular bench** system 100% recyclable in anodized aluminium.

The collection includes a matching planter which can be placed on either side o the seat.

Is based around a range of interchangeable components that offer the best choice of style, materials, size and feature, *functional and also aesthetic benefits.*



With the option of biodegradable and legally sourced timber slats or composite wood-look slats. To realize them we use:

RESYSTA® technology

Products made of Resysta® have the look and feel of natural tropical wood. Due to the numerous possibilities of processing a wide variety of products can be produced. By a wide variety of different manufacturing processes, products are created that exceed wood or WPC (Wood-Plastic-Composite).

As it is 100% recyclable and has a wide variety of colours it complies with all demands of modern material.





approx. 60% **rice husks** + approx. 22% **rock salt** + approx. 18% **mineral oil**

=



WHY WE HAVE CHOSEN RESYSTA®:

- ✓ Durably water and weather resistant (no swell and can be installed in water)
- ✓ Resistant against salt and chlorinated-water
- ✓ Durably UV-resistant (no fading)
- ✓ Skid-resistant (ideal for pool decks and terraces)
- ✓ No cracks and splinters (no more splintering)
- ✓ Resistant against fungal and mould decay
- ✓ Resistant against termites and other parasites
- ✓ Products partially fulfil very high fire classes (IMO certification)
- ✓ Sustainable and recyclable

Comfortable & Vandal-proof

The Garda bench system is designed to permanently enhance the elegance of both public and private areas. Garda provides both **traditional and modern looks** in any environment.

Constructed for OUTDOOR use while suitable for INDOOR setting too.







RICHARD R. BARR HALL







DOLMEN

The idea is to offer a collection that can **withstand all extreme conditions** without maintenance or repair yet is refined enough to be found indoors. Squares or courtyards of corporate or institutional spaces (universities, museums, etc.) are an extension of the interior furnishings (halls, lounge and waiting areas) where the architectural envelope is transparent even in airport terminals.

The combination of materials such as Lapitec® and stainless steel naturally lead us towards a higher level product. Thanks also to its visual characteristics.





LAPITEC®



Beyond marble Lapitec®, produced and developed entirely in Italy, is all about technology and innovation, boasting cutting-edge functional performance that makes it the perfect alternative to marble.



A revolutionary material with unique qualities, as can be seen through its 25 registered patents. Lapitec® is the world's only **sintered stone**: a timeless surface made from a selected mixture of natural and incredibly **pure minerals**, ideal for adding a touch of charm to any environment.



LAPITEC® product pluses

Lapitec® reinterprets the magic of nature, creating a 100% natural and one-of-a-kind material **from simple grains of mineral powder**: perfect, elegant and highly resistant: innovative, natural, pure.

Does not include any resin or oil derivatives and nor does it have any digital prints on its surface and does not release any substance into the environment where it is installed.

The **product life cycle is reversible**, meaning that the material may potentially be destroyed and turned back into powder – back into a raw material – able to be reused again in the production process.





UV STABLE

Colour unaffected by sunlight



SCRATCH RESISTANT

Highly resistant to abrasions and scratches



CHEMICAL RESISTANT

Unaffected by alkaline or acid products



EASY TO CLEAN

Non porous and stain resistant



FROST RESISTANT

Resistant to low temperatures



HEAT RESISTANT

Resistant to high temperatures



GREEN

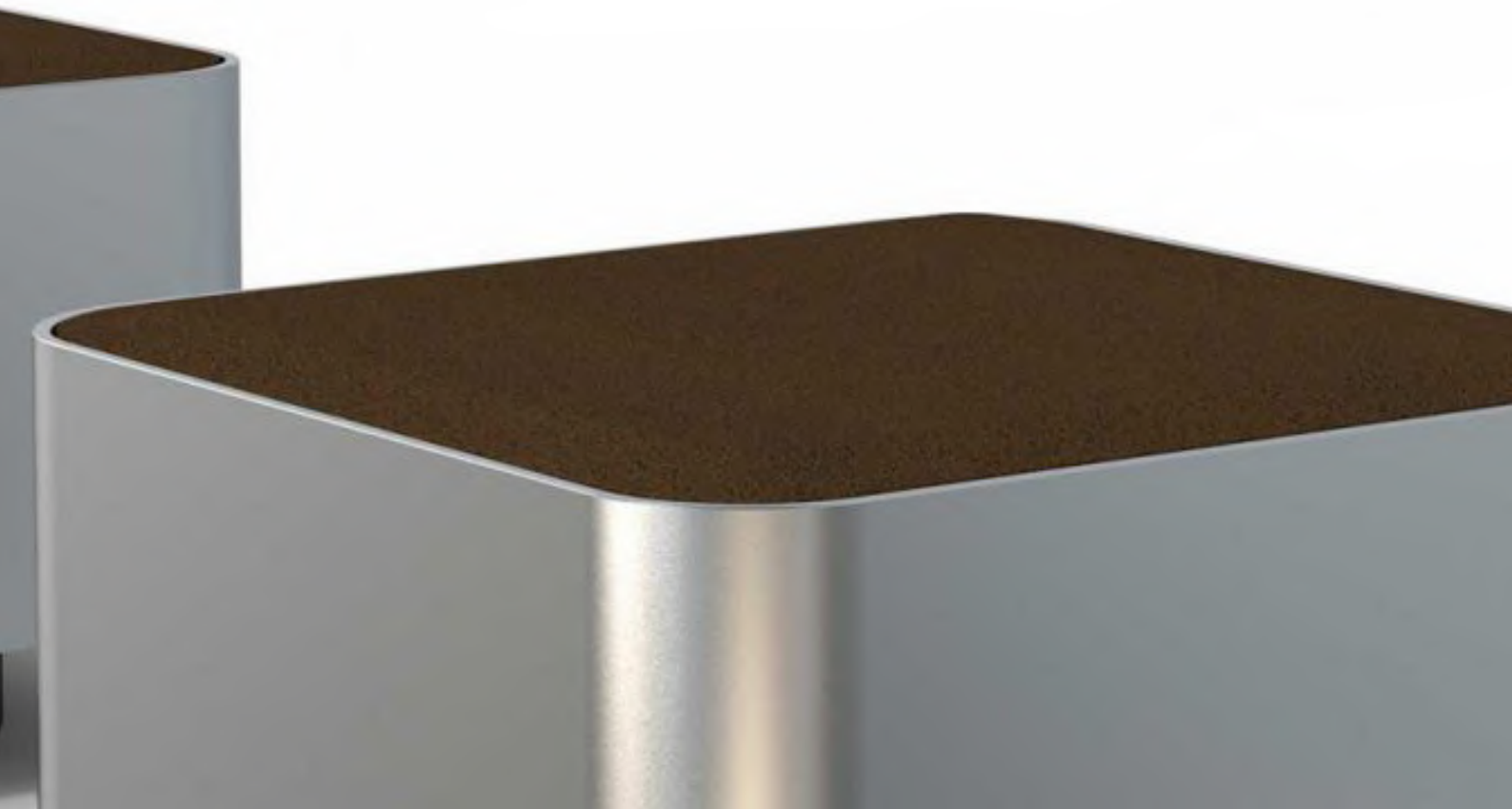
Not printed and 100% natural

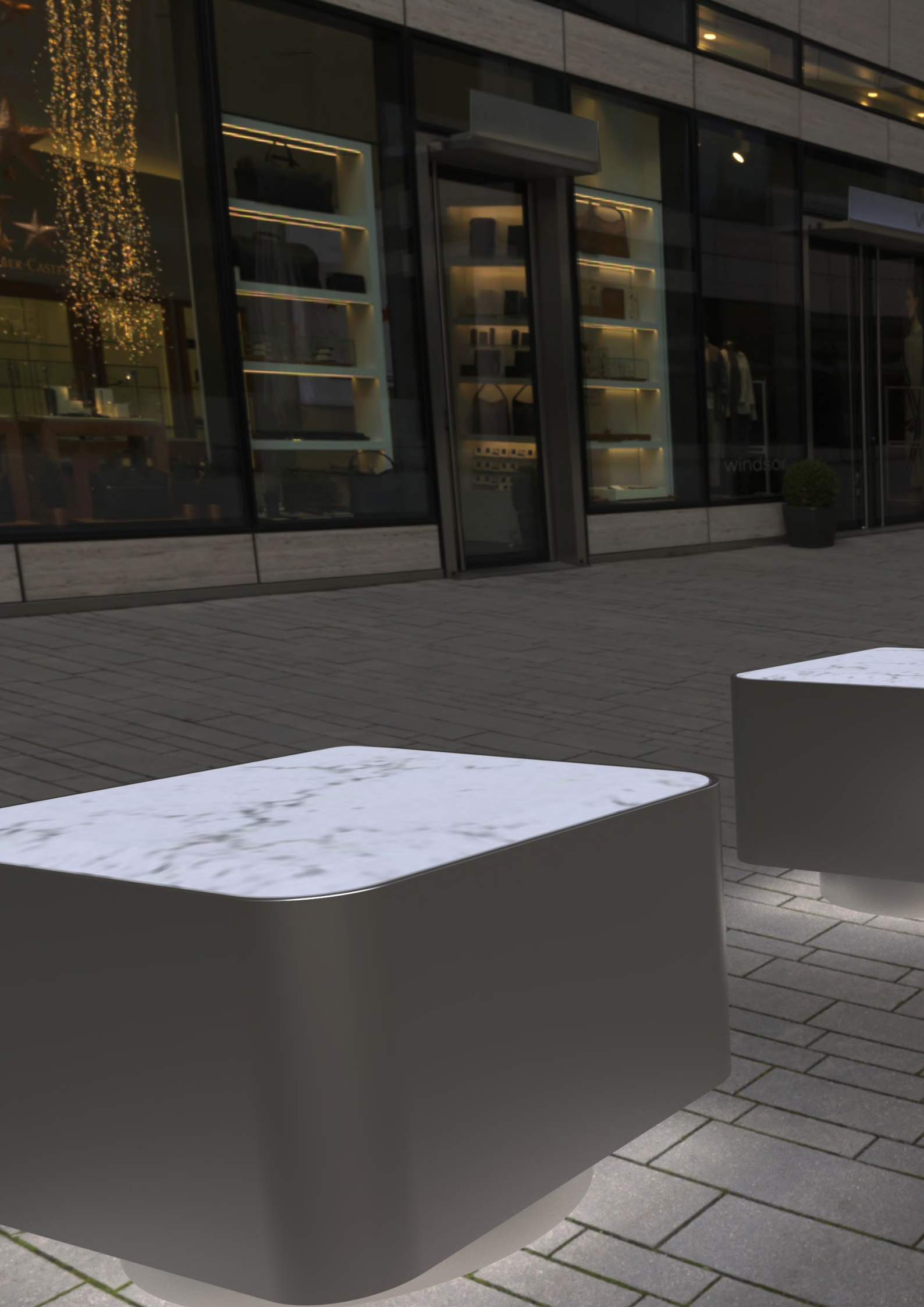


HYGIENIC

Inhospitable to fungi and bacteria

Lapitec® becomes one with the environment that we live in every day. It pays tribute to nature. It is made of nature. Starting from its essence: the minerals it is made from.









DESIGN - QUALITY - INNOVATION

This catalogue resumes the themes of the entire environmental philosophy of Altek: a new “green” world creating environmentally conscious products because it’s possible to achieve a balance between business, *quality* and environmental conservation with new *design* ideas which takes the changes of the day’s life as starting point to develop useful products with a lifecycle assessment.

*Because only with the research and **innovation**, it’s possible to compete in this global market and only upgrading the production system and preventing pollution, it will be possible to hand over our testimony to the future generation.*

Altek controls environmental activities during each step of the product lifecycle from the development and manufacturing to the distribution and disposal phases.

Altek[®]

ALTEK ITALIA DESIGN

Via Vegri 40 - 36010 Zanè (VI), Italy

Tel. +39 0445316500

www.altekitaliadesign.it

info@altekitaliadesign.it

