

Altek®

In&Out
Collection



**INDOOR &
OUTDOOR**
solutions



“For me the specific philosophy during the design phase it develops during the same project having an emotional and intuitive approach for each individual object.

Each object is unique but not essential and at the same time must be practical, multifunctional, returning to the idea of simplicity, indispensable feature for each design object”.

Giacomo Cattani,

Architect & Interior Designer, founder of Sagitair



In&Out Collection

easy to adapt

OUTDOOR chair_

INDOOR chair _

EOS/3 table_

EOS/4 table_

SHE table_

HE table_

COFFEE table_



TWO/OUTDOOR



The **TWO** chair is characterized by a light and modern design. An outdoor chair can be enriched with cushions for greater comfort.







Entirely made of metal. Chair with painted metal structure, seat and back in perforated sheet metal, for the outside there is a galvanizing treatment.



TWO/INDOOR



TWO chair with soft cushions. With the addition of full or partial padding. Its fresh and minimal design can characterize both indoor and outdoor environments, becoming elegant and comfortable for any space.













EOS/3



EOS table central base structure with 3 stars made of painted tubular steel. Adjustable feet. Top in different shapes, sizes and finishes (in laminate or HPL*).

Suitable for both indoor and outdoor environments.





La vita è un
brivido e si va via
è tutto un equilibrio
sopra la follia

Sai...
essere libero
costa soltanto
qualche rimpianto
e stanno
nel cielo e
non lo so
Cosa non darei
per stare
su una nuvola
siamo quelli
delle illusioni...
delle grandi
passioni

a volte perdi
l'attimo ... Poi
ti accorgi che
dentro ... C'era
l'infinito



EOS/4



EOS table central base structure with 4 stars made of painted tubular steel. Adjustable feet. Top in different shapes, sizes and finishes (in laminate or HPL*).

Suitable for both indoor and outdoor environments.

HE & SHE



Metal tables with ballasted cylinder base, with cylinder available in two shapes: Short - SHE or Long - HE. Steel structure painted in various colours. Top in different shapes, sizes and finishes (in laminate or HPL*).

Suitable for both indoor and outdoor environments.



Available in the version with galvanizing treatment for outdoor use.
Also available in the low version for coffee tables.

SHE - Coffee table. Metal tables with ballasted cylinder base. Steel structure painted in various colours. Top in two types of marble (Carrara or Luculleum) in different shapes and sizes.

Suitable for both indoor and outdoor environments.



Available in the version with galvanizing treatment for outdoor use.

COLOURS AVAILABLE/STRUCTURE



Polyester powder coat
PEARL GREY - RAL 7047



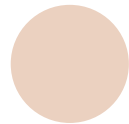
Polyester powder coat
DOVE - PANTONE 402C



Polyester powder coat
COFFEE



Polyester powder coat
CORTEN



Polyester powder coat
PINK



Polyester powder coat
WHITE - RAL 9003



Polyester powder coat
RAL 3002



Polyester powder coat
OCRA YELLOW - RAL 1024



Polyester powder coat
OLIVE GREEN - RAL 6021



Polyester powder coat
LIGHT GREY - RAL 7035



Polyester powder coat
AZURE BLUE - RAL 5009



Polyester powder coat
BLACK - RAL 9005



Polyester powder coat
ALUMINIUM - RAL 9006



Polyester powder coat
TITANIUM - RAL 7048



Marble
CARRARA



Marble
LUCULLEUM

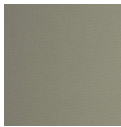
* HPL Compact Form resists just about everything: wear and tear, humidity, steam, ultraviolet rays, termites, fungi, spores and mildew (suitable for coming into contact with foodstuffs). It is self-extinguishing and fire-resistant. Ideal for indoor and outdoor public spaces.

COLOURS AVAILABLE/CUSHIONS

Clouds Break



1



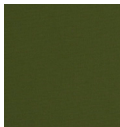
2



3



4



5



6



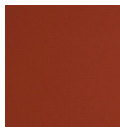
7



8



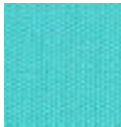
9



10



11



12



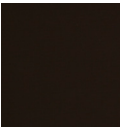
13



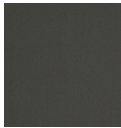
14



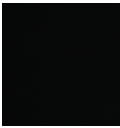
15



16



17



18

Composition:	100% outdoor acrylic
Light fastness:	7-8, UNI EN ISO 105-B04
Tensile strenght WARP:	1180, UNI EN ISO 13934-1
Tensile strenght WEFT:	686, UNI EN ISO 13934-1
Characteristics:	Tear strength, easy to clean, resistance to UV rays, resistance to mould and bacteria, oeko tex, water repellent and fire resistance.

COLOURS AVAILABLE/CUSHIONS

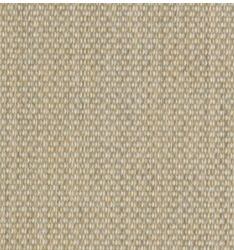
Clouds Twilight



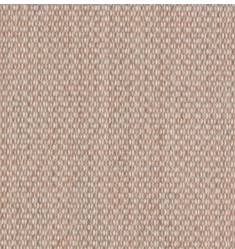
301



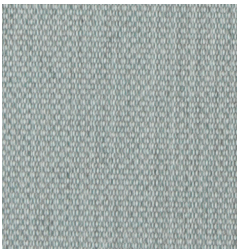
306



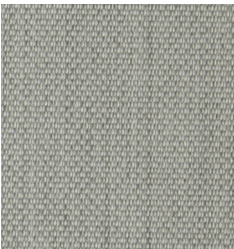
307



309



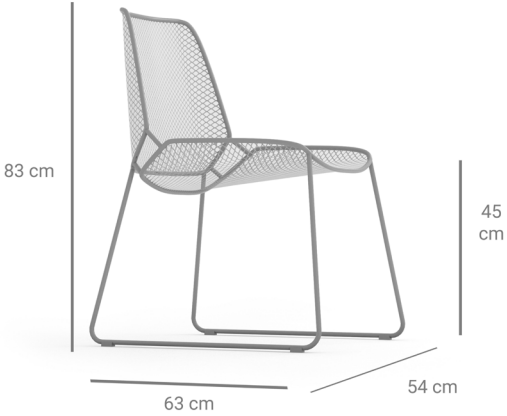
312



318

Composition:	100% outdoor acrylic
Light fastness:	7-8, UNI EN ISO 105-B04
Tensile strenght WARP:	2200, UNI EN ISO 13934-1
Tensile strenght WEFT:	1300, UNI EN ISO 13934-1
Characteristics:	Tear strength, easy to clean, resistance to UV rays, resistance to mould and bacteria, oeko tex, water repellent and fire resistance.

TECHNICAL INFORMATION



TWO/OUTDOOR

height	83 cm
seat height	45 cm
width	54 cm
depth	63 cm



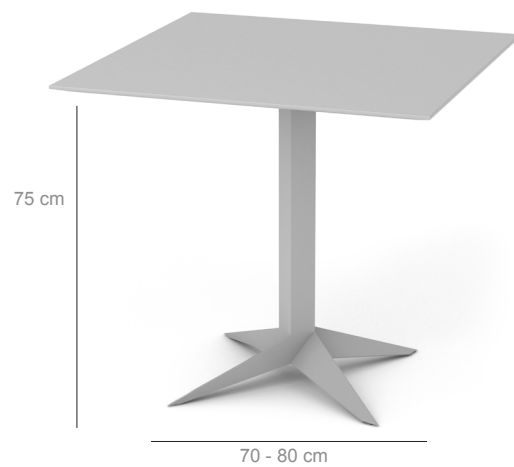
TWO/INDOOR

height	83 cm
seat height	45 cm
width	54 cm
depth	63 cm



EOS/3

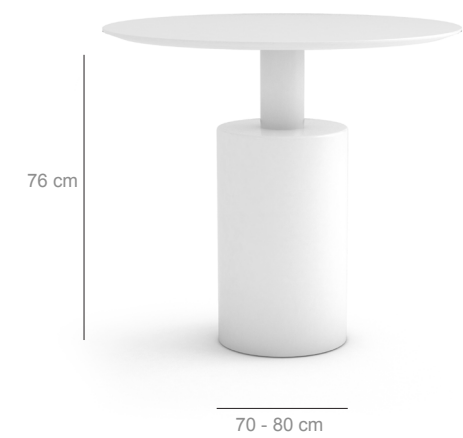
height 75 cm
overall width Ø 70 cm or 80 cm
overall depth Ø 70 cm or 80 cm



EOS/4

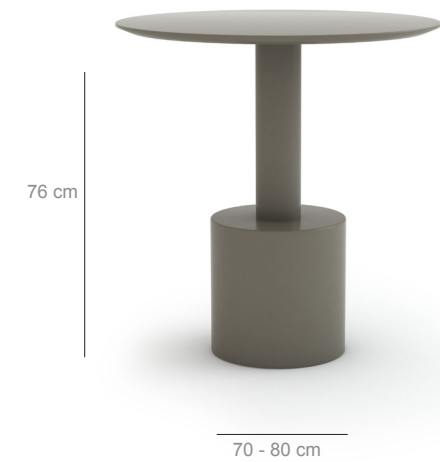
height 75 cm
overall width 70 cm or 80 cm
overall depth 70 cm or 80 cm

TECHNICAL SPECIFICATIONS



HE Dining table

height	76 cm
overall width	Ø 70 cm or 80 cm
overall depth	Ø 70 cm or 80 cm



SHE Dining table

height	76 cm
overall width	Ø 70 cm or 80 cm
overall depth	Ø 70 cm or 80 cm



SHE Coffee Table

height	50 cm
overall width	Ø 70 cm or 80 cm
overall depth	Ø 70 cm or 80 cm



Altek[®]

Altek Italia Design S.r.l.

Via Vegri 40

36010 Zané (VI), Italy

t.: (+39) 0445316500

info@altekitaliadesign.it

www.altekitaliadesign.it